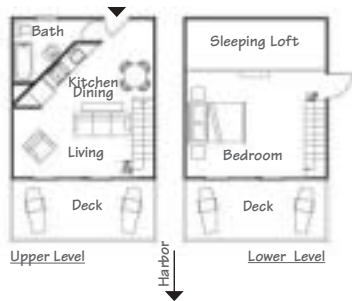


The Barn



A bright duplex with living-dining-kitchen and full bath on the first floor and large bedroom on the lower level. Both floors have private decks overlooking the harbor.

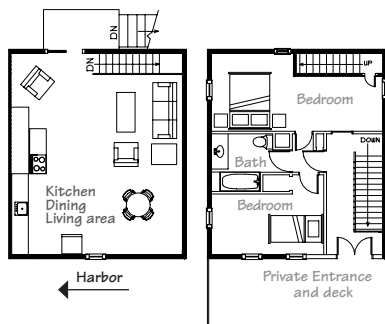


Occupancy
2 persons

The Townsend



A very spacious triplex with dramatic views of the harbor. The living, dining room, kitchen areas, are on the third floor, the two bedrooms on the second, and a deck and private entrance are on the first floor. The space is brightened by several skylights.



Occupancy
3 persons
+
a convertible
for 2
occasional
guests

Moorings Views



Maine Coast

The Moorings

7 Vacation Rental
Apartments
On The Harbor
New Harbor, Maine



A Special Resort

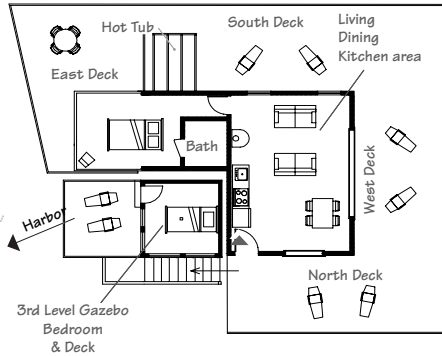
Indoor
Heated Swimming Pool
Tennis Court
Hot Tub



POB 37, New Harbor, Maine 04554
e-mail: tscapco@aol.com
www.themooringsnewharbor.com
Summer Phone: 207-677-2409
Winter Phone: 617-731-4274
Voice Mail: 617-281-2104

The Poolside

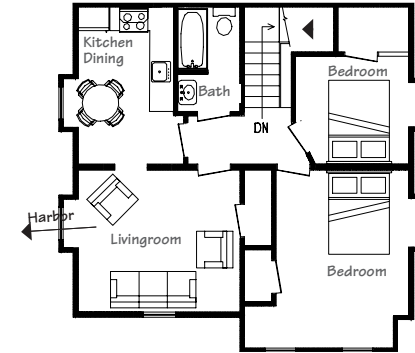
The Poolside Apartment is a two-level unit with spacious decks facing north, south, east and west. The tower bedroom has the most spectacular views of the harbor. A second bedroom with living-dining-kitchen and separate bath are on the first level. The hot tub area and pool are adjacent.



Occupancy
4 persons

The Moorings

Seven elegantly appointed apartments in historic houses overlooking Maine's most photographed and unspoiled fishing village. The apartments are central to Pemaquid Peninsula's vacation resources and are within walking distance of nearby places of interest that make Mid-Coast Maine delightful and unique.

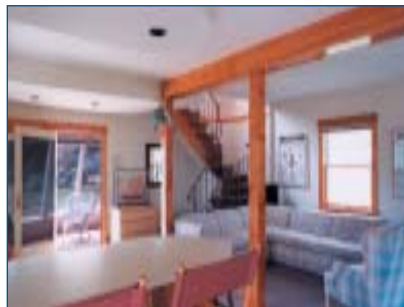


The highest unit of The Moorings, with a superb view of the harbor, this unit has a living room, eat-in kitchen, 2 bedrooms and full bath.

Occupancy
4 persons

The Carriage House

The renovated carriage house is a duplex with large living-dining-kitchen area and separate conservatory-sunroom on the first floor and two bedrooms and full bath on the second floor.



Occupancy
4 persons
+ a convertible for
2 occasional guests

The Owens

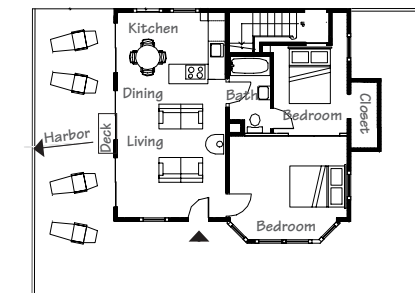
Sunny and bright, with a large living room, a separate kitchen-dining room and bedroom. The large deck adjoins both the kitchen and living room.



Occupancy:
2 persons

The Brackett

Built on the entire first floor of the original Brackett home, this unit has exceptional views of the harbor and all of "The Moorings." The unit has a large living-dining-kitchen area, full bath, gas fireplace and two bedrooms.



Occupancy
4 persons